

Salt Lake City North Bench Pump Station

Greater Avenues Community Council Meeting

March 6, 2024



Overview

- Project background
- Site Selection
- Project Process
- Context
- Next Steps
- Q & A



Background

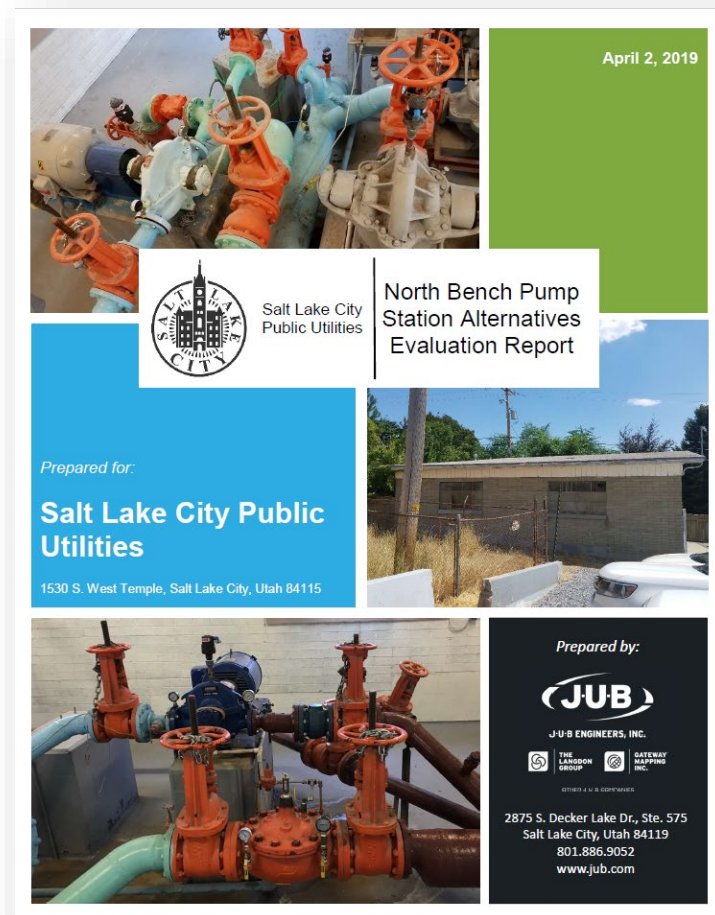
- The existing station is located at 647 East 18th Ave.
- The existing bench pump station delivers culinary water to residents north of downtown SLC
- The bench pump station receives water from the Morris Reservoir (est. 1898) and City Creek Water Treatment Plant (est. 1955)
- Built in the 1950s



Figure 3. Photo of North Bench Pump Station (July 2018)

Project Introduction

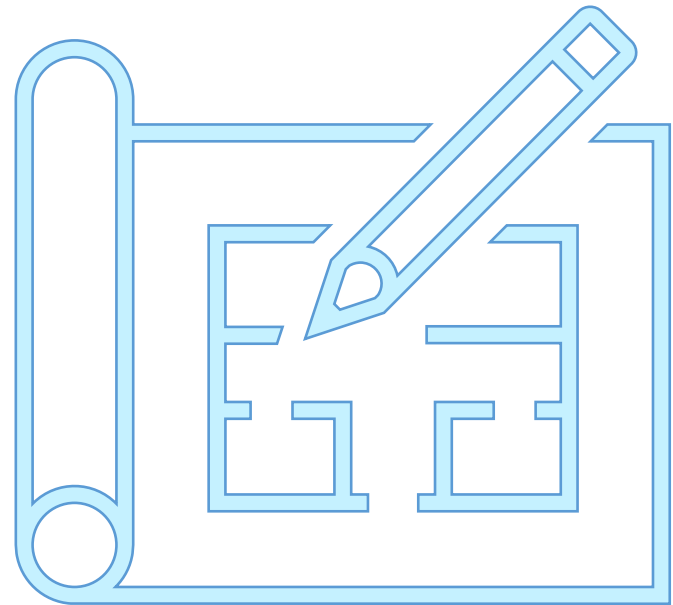
- SLCDPU hired Hansen, Allen, & Luce Inc. & Logan Simpson (PI)
- The existing station has exceeded its useful service life
- Significant inefficiencies due to existing infrastructure
- Lack of flow measurement
- Aging valves and pumps
- Full replacement is desired to improve the reliability and serviceability of the system.



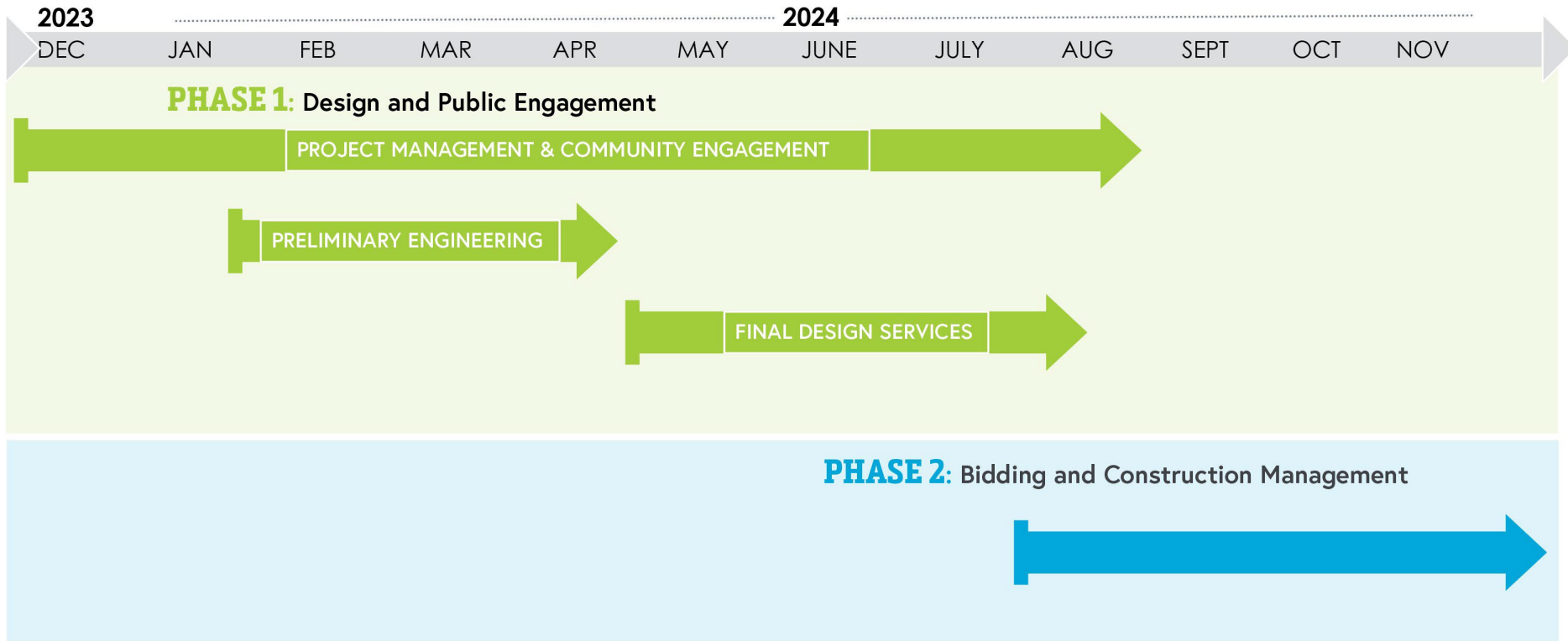
Public
Utilities

Site Selection

- In 2019 JUB Engineers Inc. performed an alternative evaluation report
- Criteria for the selection process
 1. Sound mitigation and public interference
 2. Access and constructability
 3. Piping length
 4. Service utilities – access to power, natural gas, drainage



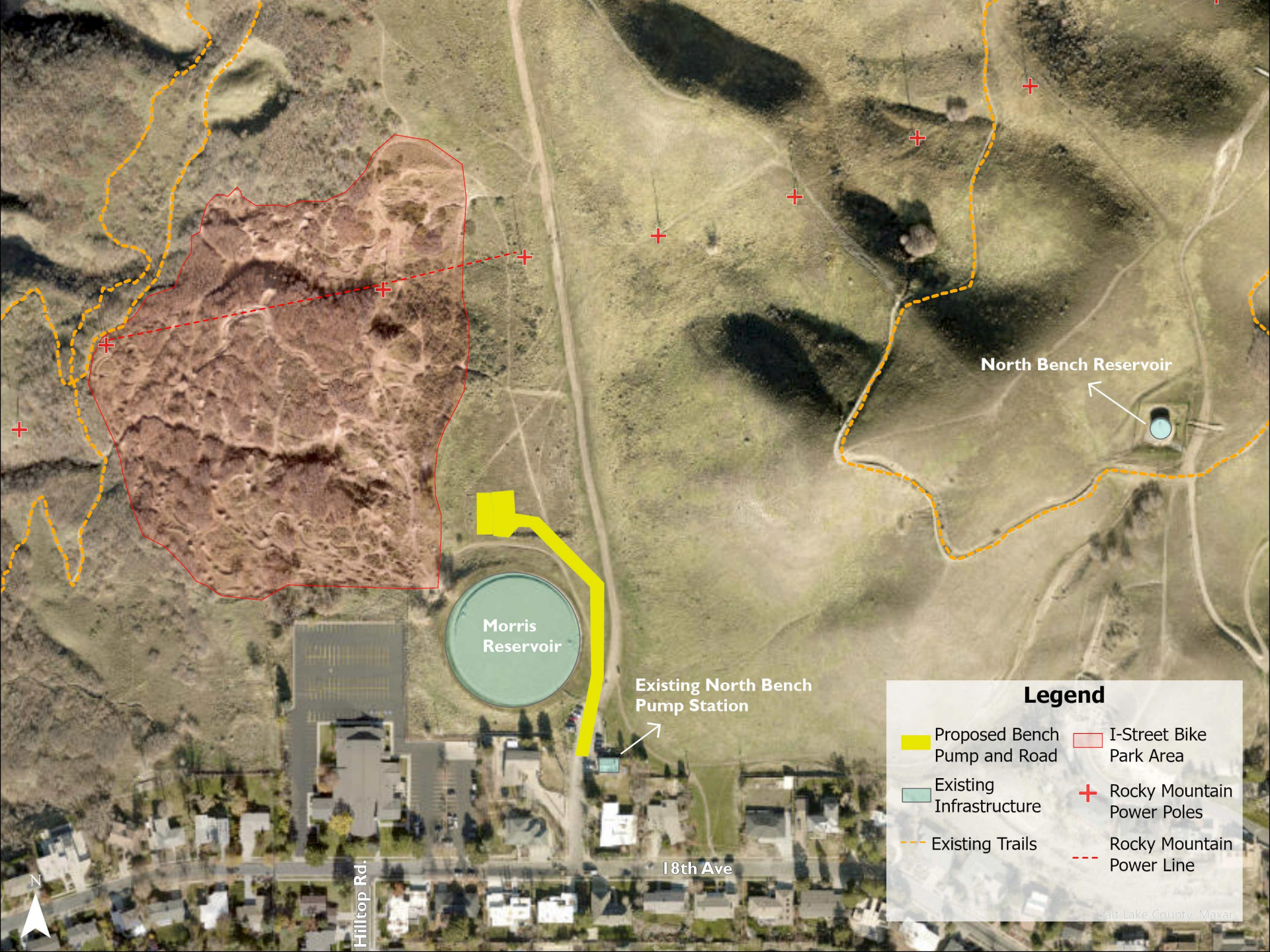
Process



Context

- Other projects in the area
 - Rocky Mountain Power Wildfire Mitigation Project
 - I Street Bike Park
 - 18th Ave Trailhead Project
 - Foothills Master Plan
- Public Lands trail access





North Bench Reservoir

Morris Reservoir

Existing North Bench Pump Station

18th Ave

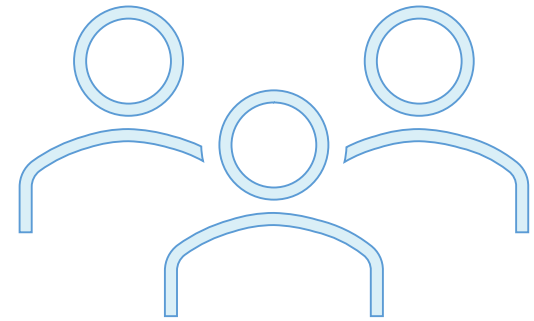
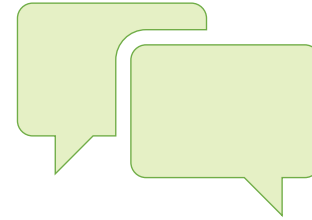
Hilltop Rd.

Legend

- | | |
|------------------------------|----------------------------|
| Proposed Bench Pump and Road | I-Street Bike Park Area |
| Existing Infrastructure | Rocky Mountain Power Poles |
| Existing Trails | Rocky Mountain Power Line |

Next Steps

- Consultant Team to develop Public Engagement Plan
- BAC Meeting- March 18th
- I Street Bike Park Stakeholder Group- March 20th
- Engage Key Stakeholders
 - BAC
 - TAB
 - GACC
 - SLC Departments- Public Lands, Public Utilities
 - SLC Committees
 - Adjacent property owners
 - I Street Bike Park Stakeholder Group
 - Who are we missing?
- What are mitigation efforts that you hope to see?



Questions?



Public
Utilities